

Einstein's Career and Vocation





Einstein's Career and Vocation



Introduction	3
Natal chart and planet's position	5
List of your active planetary aspects	6
Possible jobs, motivation and assets	7
Your suitable jobs, your career	7
Your professional motivation	8
Your assets and your weaknesses	9
Alternative professional paths	12
The daily atmosphere at work	13
The nature of your daily work	13
The way you experience your professional duties	14
The money earned through your work	14
Your integration and career development capacities	15
Predispositions which may have an influence	16
Conclusion	19





Einstein's Career and Vocation

Introduction

What is my calling? Is my job made for me? If I feel like changing direction, which one may suit me? Have I got several options? Am I right to undertake this training? Here are questions which may pop up at any stage of our life, bearing in mind that our modern society forces us to do soul searching more than in the past. In addition, the professional context has become tougher, and often compels us to take stock of our potential and our aspirations.

For this report, focusing on career and vocational guidance, we have chosen to analyse the features specific to these areas, leaving aside those which are related to the personality in general, such as for instance the Sun sign - Ascendant combination, which provides only indications on the character: indeed, one may very well have a career in the military while being a Cancer or a Pisces. Similarly, one may be a perfume creator and an Aries or a Sagittarius.

In the case we are interested in, i.e. carrying out an astrological diagnosis of your social and professional destiny, it is the 10th House taken in its entirety, starting with its cusps, the Midheaven (MC), that we assess in detail. It is necessary to examine the sign it tenants, the aspects formed by planets if any, as well as their presence in the 10th House. Technically, the position of the axes is given by the time and place of birth. Therefore, it is a particularly precise and personal indicator.

Traditionally, the whole 10th House provides information on the social status and the success concretely seen by everybody. It is a "brilliant" House, as demonstrated by many acclaimed astrologers, and the planets conjuncting the MC axis are often dominants, and those in the 10th House are always important for the entire chart. Among other works, we refer in this regard to the researches of Michel Gauquelin, who has established statistics showing this power of influence. It goes without saying that these effects are mainly felt in the social and professional area.

However, one must not deduce a contrario that people having no planets conjunct the MC or even posited in the 10th House will not experience a remarkable professional destiny. In the charts of Barack Obama, Steven Spielberg, or Rupert Murdoch, there are no planets in this House. Nevertheless, their destiny will go down in history. Why? Simply because other indicators are at play.

Beyond idealistic concepts like destiny, each of us is led to practise a job or to accomplish

daily routine tasks, which are utterly important, given the time we dedicate them. This practical profile, which concerns our duties, is described by the 6th House. The astrologer finds there elements on the ambiance which may suit us, and on our relationships with colleagues or possible partners.

It is also necessary to examine income. Don't we say "to earn one's living"? When the moment comes to choose a profession, we wonder whether it will feed us. This is why we must mention it and analyse the ruler of the 2nd House as well as the planets posited in this House.

Work is above all a powerful agent for social integration. Ideally, everyone is prompted to bring one's personal qualities into the public sphere. The role of Jupiter and his possible link with Saturn is studied here as a factor of adaptation to society.

The distribution of the planets in the natal chart also provides additional fine-tuning or further confirmation of certain characteristics regarding the way the person experiences his professional development.

Let us precise once more that, in our opinion, each sign enables to practise any activity. On the other hand, the person concerned behaves in ways which are specific to each zodiacal temperament.

Since astrology is neither deterministic nor fatalistic, your chart will not stick a label or define a precise job for you. But it will offer food for thought based on your penchants, your talents, and your competences.

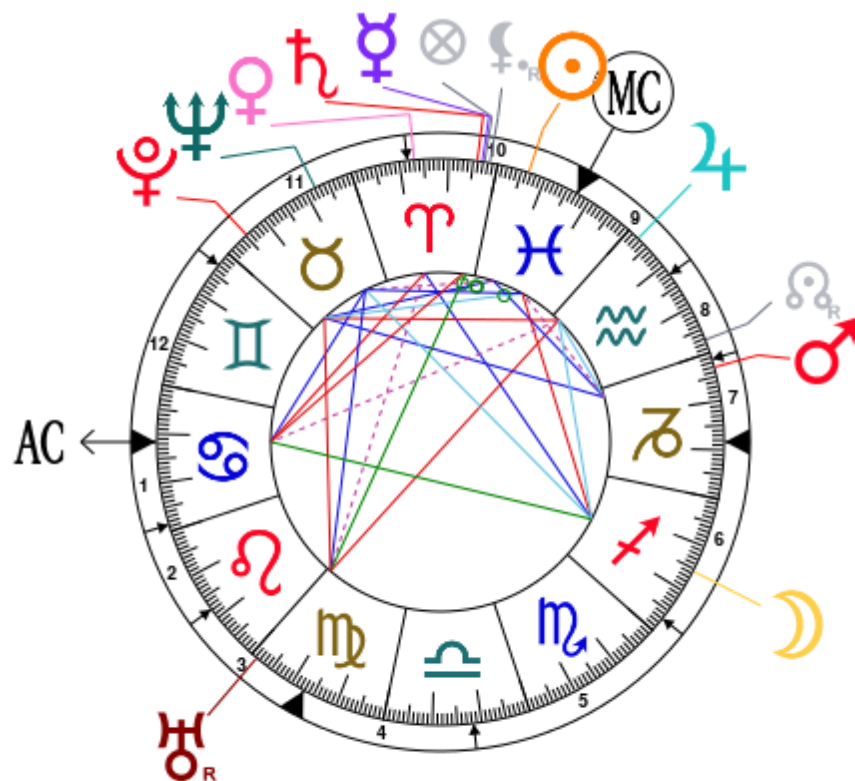
Thus, we hope that this report will enable you to better discern your natural affinities so as to find the best suitable path.

Natal chart and planet's position

Einstein, born March 14, 1879, at 11:30 AM, Ulm (Baden-Württemberg), Germany [10.00E ; 48.24N ; 0E40]

Natal Planets			In House	Natal Houses (Placidus)		
☉ Sun	23°30'	♓ Pisces	House 10	House 1	11°38'	♋ Cancer
☾ Moon	14°32'	♐ Sagittarius	House 6	House 2	28°37'	♋ Cancer
☿ Mercury	3°09'	♈ Aries	House 10	House 3	17°48'	♌ Leo
♀ Venus	16°59'	♈ Aries	House 10	House 4	12°50'	♍ Virgo
♂ Mars	26°55'	♐ Capricorn	House 7	House 5	18°20'	♎ Libra
♃ Jupiter	27°29'	♒ Aquarius	House 9	House 6	3°06'	♐ Sagittarius
♄ Saturn	4°11'	♈ Aries	House 10	House 7	11°38'	♐ Capricorn
♅ Uranus	1°17' R	♍ Virgo	House 3	House 8	28°37'	♐ Capricorn
♆ Neptune	7°52'	♉ Taurus	House 11	House 9	17°48'	♒ Aquarius
♇ Pluto	24°44'	♉ Taurus	House 11	House 10	12°50'	♓ Pisces
♁ Node	2°44' R	♒ Aquarius	House 8	House 11	18°20'	♈ Aries
♁ Lilith	1°37' R	♈ Aries	House 10	House 12	3°06'	♊ Gemini
AS AS	11°38'	♋ Cancer				
MC MC	12°50'	♓ Pisces				

In keeping with the common practice, we consider that a planet posited within 1 degree of the next house belongs to that house. We allow an orb of 2 degrees for the ASC and the MC.



List of your active planetary aspects

Below, provided for information purposes only, are the list of all your active aspects.

Stars indicate the strength of the aspects. The yellow colour indicates a soothing and conciliating aspect, and the red colour, a dynamic and tense aspect. The red aspects enable you to evolve, to take action, and to learn to turn your "weaknesses" into assets through your life experiences. The yellow aspects are innate strengths on which you rely in order to grow better with the former.

N.B.: to assess the condition of the rulers of the 10th and the 2nd Houses, as well as the condition of the planets in the 6th and the 10th Houses, all aspects between planets are taken into account, except for the aspects to angles, given their passive nature.

★★★★★	Sun conjunction Mercury, orb 9° 38'
★★★★★	Sun sextile Mars, orb -3° 24'
★★★★★	Sun conjunction Saturn, orb 10° 4'
★★★★★	Sun semi-square Neptune, orb -0° 38'
★★★★★	Sun sextile Pluto, orb 1° 13'
★★★★★	Sun conjunction Midheaven, orb 10° 4'
★★★★★	Moon trine Venus, orb 2° 27'
★★★★★	Moon quintile Jupiter, orb 0° 57'
★★★★★	Moon bi-quintile Neptune, orb -0° 39'
★★★★★	Moon inconjunction Ascendant, orb 2° 53'
★★★★★	Moon square Midheaven, orb -1° 41'
★★★★★	Mercury conjunction Saturn, orb 1° 02'
★★★★★	Mercury inconjunction Uranus, orb -1° 51'
★★★★★	Venus sesqui-quadrate Uranus, orb -0° 41'
★★★★★	Venus square Ascendant, orb -5° 2'
★★★★★	Mars semi-sextile Jupiter, orb 0° 34'
★★★★★	Mars trine Pluto, orb -2° 11'
★★★★★	Mars semi-square Midheaven, orb 0° 55'
★★★★★	Jupiter opposite Uranus, orb -3° 48'
★★★★★	Jupiter square Pluto, orb -2° 45'
★★★★★	Jupiter sesqui-quadrate Ascendant, orb -0° 5'
★★★★★	Saturn square Ascendant, orb 7° 27'
★★★★★	Uranus trine Neptune, orb -6° 35'
★★★★★	Uranus square Pluto, orb 6° 33'
★★★★★	Neptune sextile Ascendant, orb 3° 46'
★★★★★	Neptune sextile Midheaven, orb -4° 57'
★★★★★	Pluto quintile Midheaven, orb -0° 06'

Possible jobs, motivation and assets

Your suitable jobs, your career

According to the Tradition, which dates back to Ptolemy, the 10th House, which begins with the Midheaven (MC), describes honours and dignities. The whole House gives the image of your overall destiny, with your major goals and your vocation, if it can be expressed openly. It is about potential for outstanding achievements and not about work as a means of existence.

Technically, the 10th House may include one or two signs, sometimes three. However, this report delineates only the MC, much more decisive according to the statistics, and essential in any case. The cusp of this axis points directly at the stars, since it is also the zenith of the chart. Therefore, its symbolism is clear. It speaks volumes about your ambitions, your lifestyle, your social status, and your social and professional success, as noticed by other people.

Your MC is in Pisces

Your public destiny naturally pushes you towards social or humanitarian causes, Einstein. The MC in the 12th zodiacal sign indicates a penchant for professions dealing with man in the general meaning of the term: philanthropy, spiritual topics, religion, welfare. Jobs as a coach or a guru are examples which suit you very well.

You progress better if you do not receive strict directives. Indeed, you feel more comfortable if you steer your career intuitively, without ambition. Thus you know how to be opportunist and to demonstrate good flair.

With the MC in this position, you are not interested in materialism. Climbing the social ladder, being appointed to a managerial post, getting outstanding remuneration, none of this is very meaningful to you.

It frequently happens that your social status fluctuates. You may suddenly make a lot of money – thanks to your feeling, your talent, or by sheer luck – and you may lose everything in quite unclear circumstances. You ought to beware of illusions, pipe dreams, and people promising the moon, since somehow you are naive because you are overly idealistic.

Anyway, you are anything but a shark prepared to kill in order to impose yourself, because you need to be loved and appreciated. The people you mix with at the workplace should tell you so, especially if they are your clients or the public. In a word, you represent the good one on the professional chessboard.

Inspiration is your constant guide when you make strategic decisions. Your assets are flexibility and adaptability. The more you feel comfortable, the more you release your inbred creativity. The ambiance at work is highly important. It must be pleasant, if you are to be successful.

Altruistic and generous, you often turn towards health professions: nursing, medical practitioner, veterinarian, pharmacist. But also specialist in addictions, social worker, or humanitarian delegate. Or cleaner, or housekeeper, to be more concrete.

Artistic jobs such as musician, dancer, drama, TV, or movie actor, writer, poet, are also suitable.

Owing to the reference to Pisces' Water element, you are drawn to all activities related to the sea or to aquatic subjects. You may find your calling as a sailor, a fisherman, or a coastguard, but also as a hotel manager in a touristic region with lakes or rivers.

Feeling at ease in the sensitive world, you may also become a clairvoyant, a psychic, or a priest.

The keywords defining your path are as follows:

Fusion, streams, feelings, intuition, empathy, solidarity, spirituality, osmosis, crowd, sensations.

Your professional motivation

You may not have been able to identify yourself with the concrete jobs enumerated at the end of the chapter dealing with the MC. Indeed, we carried out the exercise bearing in mind that it is impossible to give an exhaustive inventory for each of the twelve signs. Therefore we have chosen to limit it to the most typical ones, according to the traditional interpretation. However, a human being never corresponds to a "cliché".

On the one hand, there are so many medical practitioners, carpenters, or civil servants that the list could be endless, whether they are Aries, Taurus, Gemini, etc. The only nuance is that they are likely to practise in an Aries, Taurus, Gemini, and so forth, manner.

On the other hand, the world is changing, and nowadays, there is a large range of options which evolves fast. Fortunately, other indicators enable us to complete the picture. To begin with, we assess the role of the MC ruler, which also provides information on the way you work and how your vocation was born.

Your MC ruler is Neptune

Einstein, after having found the position of the MC, we focus on the planet ruling this sign, namely Neptune.

As far as your professional decisions are concerned, you let your intuition and your impressions guide you, since you are very influenced by the atmosphere surrounding you. You may not always be able to choose your path, because you tend to experience your desires inwardly and passively without taking action.

Your motivation is as shifting as the sea and its backwash movements. You are instinctively drawn to groups or to organisations which enable you to share the same emotions all

together in a warm and symbiotic communion, such as for instance in artistic, humanitarian, or spiritual circles.

The ruler in the 11th House

Einstein, after having found the location of your MC and its ruler, we now look at the latter's position in House. This is how we get additional clues to your professional motivation, which may confirm the above, or sometimes, be completely different. Should this case occur, bearing in mind that a career profile is seldom uniform or bland, the possibilities of progress are widened.

In your chart, Einstein, the ruler of the MC is in the 11th House. Therefore, your professional destiny is facilitated or marked by associations, friendships, and collective companies.

You instinctively seek allies among those who prepare projects similar to yours. You need to imagine yourself in the future in order to anchor your professional choices. Whether you do so in a very concrete way, in accordance with a utopia or a political idea, is finally of little importance. In any case, it is certain that you can find help and protections on your route.

To conclude the analysis of the ruler of your MC, we examine its condition, namely the number of positive and/or negative aspects it receives, among other factors, including the sign in which it is posited.

Einstein, your ruler, Neptune, is in good celestial condition. This means that this planet receives mainly favourable aspects, or that they are more numerous and more important than those considered to be tough aspects. Therefore, you can rely on all the various positive facets of Neptune.

Your assets and your weaknesses

Planets could be considered as lever arms enabling you to further your career. They influence this area of life according to their specific nature, and they show how you approach vocation, work, or social status.

When they are in the 10th House, their impact is direct, noticeable, and obvious. This applies all the more strongly to conjunctions with the Midheaven (MC), in which case they favour your position, or they warn about possible pitfalls. To use a metaphor, a planet on the Midheaven resembles a person who expresses easily his character, his temperament and his tastes when he deals with his career.

However, the 10th House is empty in many charts. This does not mean, in line with what we have written in the introduction, that this area of life is uneventful. In such cases, the analysis should focus on the Midheaven and on the ruler of the 10th House, which are not affected by the presence of other planets.

As far as your assets and weaknesses are concerned, it is also necessary to examine the

planets aspecting the MC. Similarly to a presence in the 10th House, the aspect of a planet's specificity colours your social destiny, for good or ill.

Here again, in some natal charts, there is no relationship between the planets and the MC. This leads us to draw the same conclusion as that which we have just underlined whenever the 10th House is empty. This does not mean that there is nothing interesting to say, only that the interpretation must be limited to delineating the sign sheltering the MC and its ruler, who remains the "sole person in charge", regardless of his position in the chart.

The Sun conjuncts the MC axis and is in the 10th House

Einstein, in your chart, the Sun conjuncts the MC. With such a position, this planet is among your dominants. Its influence is reinforced as far as the career is concerned. In general, you know quite early what you desire, and your will is naturally at the service of your social or professional achievements. With your unquenchable thirst for recognition, you constantly seek the best for you and your family. A born leader endowed with startling charisma, you are meant to rule and to shine. However, there is a risk that you stand in your entourage's light without even realising it, because you are too busy walking up bravely the stairs of your success.

Mercury in the 10th House

Einstein, in your chart, Mercury is in the 10th House. Your sense of communication and contact enables you to impose yourself in the social and professional sphere. You have a talent for any occupation involving interpersonal skills. The written or the spoken word, depending on the case, may bring about a rapid rise.

Other possibility: manual talent, cleverness, or business acumen are your features. This position of Mercury offers numerous options. In any case, you are very adaptable, regardless of the work environment, and your state of mind remains young.

Among possible flaws, there is of course the danger of stretching yourself too thin, because you cannot help engaging in myriads of projects. Sometimes you can hardly complete them.

Mercury is in good celestial condition. This means that this planet receives mainly favourable aspects, or that they are more numerous and more important than those considered to be tough aspects. Therefore, you can rely on all the various positive facets of Mercury.

Venus in the 10th House

Einstein, in your chart, Venus is in the 10th House. This implies that your gentle nature and your powers of seduction are the signs of your social aggrandizement. You have a natural sense of diplomacy and of good manners. These are valuable assets to climb smoothly the ladder of your success.

You need to express your aesthetic and artistic inclination in broad daylight.

In this position, Venus is theoretically an omen of good luck and ease. You do not need to make too many efforts in order to be acclaimed.

An affective planet posited in the House of public image may indicate that love and career are linked. A woman of your entourage, whom you idealise (or love), may play an instrumental role and may enable you to shine in your turn.

Among possible flaws, Venus indicates some degree of nonchalance in the social and professional area.

Venus is in good celestial condition. This means that this planet receives mainly favourable aspects, or that they are more numerous and more important than those considered to be tough aspects. Therefore, you can rely on all the various positive facets of Venus.

Saturn in the 10th House

Einstein, in your chart, Saturn is in the 10th House. This does not imply that you consider with utter seriousness the topic of your social role. In this regard, you may feel frustrated. Indeed, whatever your situation may be, it never seems satisfactory, and you keep on setting yourself higher standards.

You must make many efforts to overcome obstacles. You may need to remain motivated for long periods of time, as if for a marathon.

You may be led to take big responsibilities, and you will achieve your best results when you reach adulthood. To progress, wisdom and patience are two helpful weapons.

On the downside, you may develop a sense of failure if your growth does not match the investment you made.

Saturn is in good celestial condition. This means that this planet receives mainly favourable aspects, or that they are more numerous and more important than those considered to be tough aspects. Therefore, you can rely on all the various positive facets of Saturn.

The Moon in square with your MC

Einstein, in your chart, the Moon forms a tense aspect with your MC. As a result, your whimsical tendency may not be suitable for your social and professional development. Although it is certain that you are endowed with a great deal of imagination, intuition, and flair, much more than needed, you have difficulty integrating them. Your mood swings or your qualms have an impact on the development of your career.

This configuration indicates frequent changes or some degree of instability. They stem from inner causes and not necessarily from external circumstances. If you have to work for an audience or for a clientele, you tend you have a hard time maintaining emotional stability or coping with the downside of popularity.

Neptune in sextile with your MC

Einstein, in your chart, Neptune is favourably linked to the MC. This planet heralds that your success is often brought about by social trends. You are in tune with your time, and it does not matter if you do not have a sound strategy, since all you have to do is to listen to your intuition. It is the typical position of a person feeling that he is guided in his career, although his desires seem unrealistic to people. Imagination and inspiration, even artistic talent, are the driving forces of your improvement. Here, it is out of the question that you get smothered in a rigid setting. You know how to make your way up to the top through pitfalls.

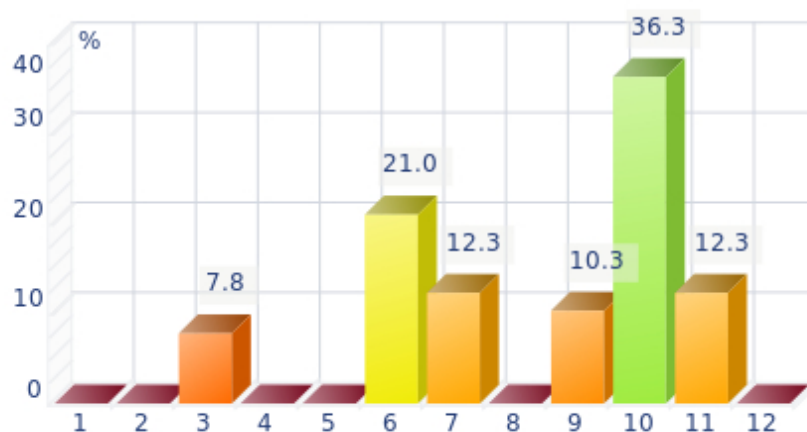
Alternative professional paths

In the previous chapter, we have seen the meaning of the Midheaven and of its ruler. Indeed, in many cases, they can provide relevant information about your professional future and about the most suitable paths for you.

However, the Midheaven, the 10th House, and the 6th House, which are discussed further down, do not always reveal the entire range of social and professional possibilities of your natal chart. Certain areas of life – symbolised by the 12 astrological Houses of your chart – are highlighted by the presence, the dignity, or the activity of the planets posited in them.

Some Houses are deemed dominant. They give additional indications in terms of taste, of desire to express your talents and to spend your energy, especially in your work. They represent different potentialities, which are offered to you in addition to those mentioned in the other chapters.

Your Dominant Houses



We are describing here the meaning of your dominant Houses, except the 6th and 10th Houses, already analysed in this Report, and the 1st House, which is not related to any concrete life area and therefore can provide no information here.

The 11th House is one of your dominants

The 11th House is that of support, protection, and friendship. It also represents collective projects, hopes, humanitarian and social causes, facility for joining groups. It is a House which may have less concrete implications than some others in terms of professional occupation, but which on the other hand is more general and offers more possibilities of career.

With an 11th House among your dominants, you are certainly prone to work with a group rather than solo. Jobs related to ecology, climatology, trade unionism, humanitarian help, NGOs may perfectly suit you.

By analogy with the sign of Aquarius, other professions may suit you: film director, pilot, astronaut, radiologist, inventor, specialist in the development of high tech products, engineer, psychotherapist, audio-visual technician, electronics specialist, computer programmer, or webmaster.

The 7th House is one of your dominants

The 7th House is that of support granted by people in general: that of associations, social services, partnerships, contracts, marriages, lawsuits, competitions, but also that of the public, and of customers for artists and suppliers. A loaded 7th House naturally points to jobs related to other people, including the career.

Jobs corresponding to a dominant 7th House may be for example barrister, diplomat, intermediary, judge, salesperson, entrepreneur linked to his spouse, adviser, arbiter, councillor of the Labour Court, negotiator, conductor, group leader, wedding planner, or master of ceremonies, etc.

But also, by analogy with the sign of Libra, hairdresser, dancer, decorator, florist, perfumer, or stylist.

The daily atmosphere at work

The nature of your daily work

The analysis of the sign in which the 6th House is found reveals a lot about the nature of your daily work. Whereas the Midheaven and the 10th House represent your vocation, your career, and your visible social status, the 6th House relates to your routine activities when you perform your job. It describes the atmosphere at the workplace, the relationships with your colleagues as well as with your clients or your suppliers.

The 6th House is about duties. It tells how you deal with constraints or limitations, if they affect your ambitions, or if you fit into the mould without difficulty.

It is necessary to keep in mind that this House is slightly less important than the 10th House, which is about professional ambition. Indeed, in the tradition, astrologers do not

give extra weight to planets posited there, whereas planets conjunct the MC are often included in the dominants of the whole chart.

Despite all this, the analysis of this part of the chart remains unavoidable in the career portrait, for it describes your usual daily activities. The concept of "day to day" activity is of the utmost importance here.

The 6th House in Sagittarius

Einstein, with the cuspid in Sagittarius, your 6th House prompts you to seek movement in your daily activities. Besides, you grasp every opportunity to travel whenever you can. In any case, your urges are hard to control. You have difficulty accepting constraints and immobility.

Depending on your training level, you aspire to an outdoor work or to explore higher intellectual matters.

You know how to spread great joie de vivre and good mood around you. Your colleagues appreciate the fact that you are the life and soul of the workplace, and that you dare to take bold initiatives. Work must be a pleasure, and you always celebrate any good news.

The way you experience your professional duties

We still have to check whether you have planets in this House, similarly to what we have done for the 10th House.

The Moon in the 6th House

Einstein, in your chart, the Moon is in the 6th House. This planet, ruler of Cancer, a highly emotional sign, indicates that psychological issues are often at play when your profession is involved.

In your daily work, relationships with your colleagues are very important to you, as well as those with your partners or your clients. Working in a nice atmosphere is a must, a sine qua non condition, if you are to give your best.

You have a great capacity to help people. However, your mood swings may lessen your productivity. The Moon is a planet which brings about needs for change or for instability in the House in which it is posited. The Moon in the 6th House may also point to some form of dependency on people or on situations encountered each day.

The Moon is in good celestial condition. This means that this planet receives mainly favourable aspects, or that they are more numerous and more important than those considered to be tough aspects. Therefore, you can rely on all the various positive facets of the Moon.

The money earned through your work

"The labourer is worth his hire". Regardless of your field of activity – free-lance job, employee, labourer, civil servant, artist, etc. – remuneration is a key factor. To understand the way you approach this topic, we shall focus on the planet ruling the 2nd House, i.e. the money you earn, since its influence may speak volumes about your capacity to turn your efforts into hard cash. In some cases, it confirms or invalidates the first texts of analysis of the career.

The Moon is the ruler

Einstein, the ruler of the 2nd House of the chart is the Moon. With the planet in this position, your personal earnings may be fluctuating. Fortunately, your intuition is good, and you can identify the tracks enabling you to be at the right place at the right moment. However, natural instability, some lack of perseverance, or doubts on your capacity to be properly acknowledged may play tricks on you. You should remember that the wheel keeps on turning, and that wealth will be back the day when your approach to work is balanced and healthy.

The ruler of the 2nd House is in the 6th House

Einstein, the ruler of your 2nd House is in the 6th House. It is through a daily and regular activity that you can make money and increase your real estate assets. Your earnings depend on your lifestyle also – particularly on your capacity to accept a certain routine – and on your organisation.

Your integration and career development capacities

We are now assessing Jupiter's position in your natal chart, which indicates how you become socially integrated.

Jupiter expresses your need or your capacity to cooperate with other people.

He also symbolises the law and the ability to adapt to rules, which is always helpful as we analyse how your vocation could fit in a society project.

Moreover, Jupiter describes the way you organise yourself, your learning potential, and your aptitude for leading a group.

This lucky planet is related to honours, to the development of your professional activity, and to the improvement of your social status.

Jupiter in the 9th House

Einstein, in your chart, Jupiter is in the 9th House. In this position, the planet brings about large-scale social recognition. This is often related to foreign matters, bearing in mind that

Jupiter is in the House with which he has the strongest natural affinities. Frequently, it is your ability to counsel and to teach, or your optimistic judgements, which favour your development. Politics or education may be the fields in which you blossom.

A report on career must examine whether there is a link between Jupiter and Saturn. The former enlarges personal horizons so as to become integrated in a group and to lead it, while the latter describes the context and the rules to be followed. Both planets form a pair, the aspects of which, if any, strongly impact the way you behave in the social and professional sphere. A possible aspect between these planets provides clues to your capacity to improve your career and to adapt to society.

Einstein, in your chart, Jupiter forms no aspect with Saturn. Therefore, there are no hindrances and no consolidation qualifying what has been said regarding your capacity for integration and for social expansion.

Predispositions which may have an influence

As this report is drawing to a close, we offer additional precisions to the professional tendencies described above, and we analyse the distribution of the planets in your chart, based on elements, modes, and quadrants.

Signs are distributed among four elements: Fire, Earth, Air, and Water. Therefore, each chart displays different proportions of them and reveals specific dispositions.

The way planets are posited in the chart divided into four equal geometrical parts must be considered: it is the distribution in quadrants.

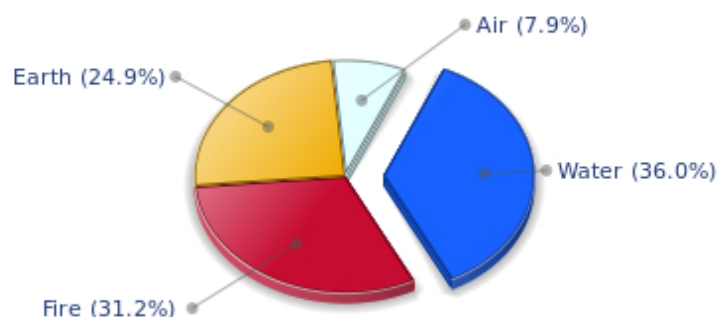
Then, in a third step, we examine the planets' position in modes: cardinal, fixed, and mutable. By analogy, they refer to a period of the season: cardinal for the beginning, fixed for the middle, and mutable for the end.

By looking at the place where the majority of planets are, we get extra pieces of information which complete the report on your career, based mainly on psychological inclinations. This predisposition is synonymous with deep preference, and not with determinism.

Your dominant elements are the Water and the Fire

This is the diagram drawn from the distribution of the ten main planets of your chart, according to the elements:

Your Four Elements



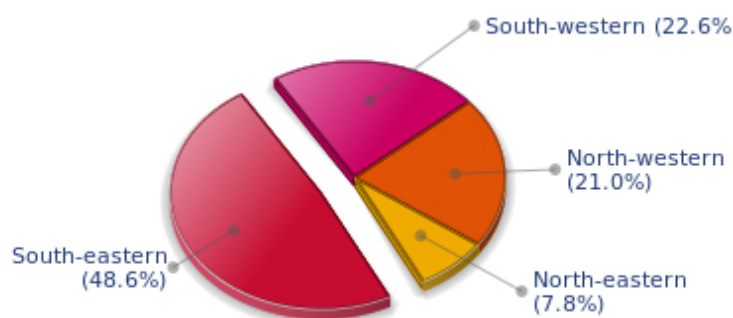
Einstein, in your chart, the elements Water (Cancer, Scorpio, Pisces) and Fire (Aries, Leo, Sagittarius) prevail over the other elements. Your ability to deeply feel things may guide you better than any rational reflexion. You guess the outcome of most situations, and also whether you can get along with people. In brief, you know what will be successful. With a rather lymphatic temperament, your relative weakness stems from some passivity. You may be too introverted or not committed enough. Conversely, you are second to none when it comes to facilitate professional relations. Moreover, your intuition works wonders.

With a dynamic temperament, you are very intuitive and enthusiastic. You have – or not – a passion for a work. If you do not, do not insist, you will not be able to go against your nature and do something which you do not enjoy. You may lack perspective or behave too boldly in your undertakings. Conversely, your faith can move mountains.

Your most represented quadrant is the South-East

Here is now the distribution of your quadrants, drawn from the analysis of the importance of the planets and the angles of your chart:

Your Four Quadrants

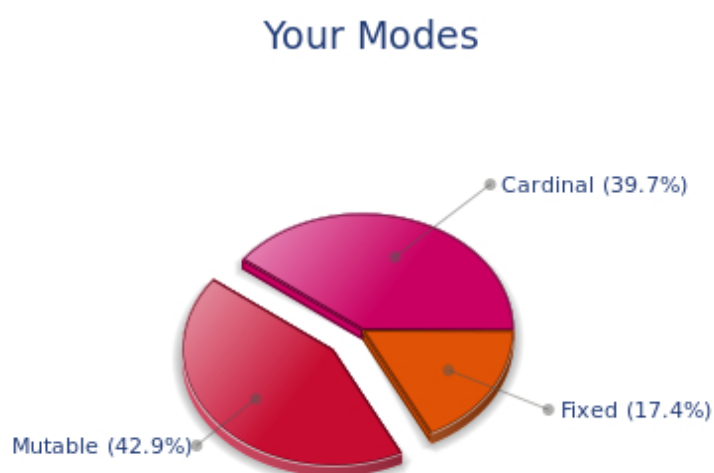


Einstein, in your chart, the South-East quadrant, represented by the 10th, the 11th, and the

12th Houses, is prevailing. You are eager to turn your dreams into reality. You achieve your ambitions as soon as possible, whether it is through a developed social life, an overly busy life with friends, or a fierce need to take action in order to reap the fruits of your natural dynamism – in people's eyes, of course. It is not rare that spiritual or humanitarian matters are among the subjects you are motivated by, be it at the price of some isolation, deliberate or not.

The mode mutable and the mode cardinal are dominant in your chart

Here is now the diagram of your modes, based on the analysis of the planets and the angles of your chart:



Einstein, in your chart, the mode mutable and the mode cardinal are dominant. You are tremendously adaptable, and you manage to progress constantly. Quick, flexible, and gifted for establishing contacts between things or people, you are always moving. You are likely to feel comfortable in a professional context which requires this type of qualities. However, be careful not to mistake mobility for restlessness or dissipation.

Your indisputable forte is your ability to take initiatives. You are very active and innovative. As far as your professional life is concerned, you are a born leader, and you are enthusiastic. Activities requiring adrenaline may suit you. However, you may be slightly too individualistic, or you may get tired rapidly, because your interest in your projects is not sustained enough.

Conclusion

The purpose of this report on your professional choices is to suggest tracks to explore. Of course, it has limits, even though, compared to other disciplines, astrology enables to unveil important secrets. It contributes in particular to confirm a diagnosis made by specialists in vocational guidance.

It is impossible to guess your occupation or to foresee that which you may choose, because, for instance, no astrological report can take into account your social environment or your training level. Nevertheless, highlighting the abilities and the tastes reflected in your natal chart can steer you towards the type or types of career which may suit you best, which is already a lot.

We hope that thus you have a clear idea of the kind of activities for which your motivation is the strongest.

Today more than ever, the range of professions is very wide, and new branches emerge each day. People also change direction more often throughout life.

We advise you to reread or to ponder over this analysis, which remains valid during your whole life, since it describes your skills at the potential level.

Also bear in mind that planetary transits indicated in our predictive reports sometimes provide the trigger necessary to embark on an activity at a given period – or to follow a different route – thus turning your potential into a real professional experience.