



Angelina's  
Career and Vocation



## Angelina's Career and Vocation



<b>Introduction</b>	<b>3</b>
<b>Natal chart and planet's position</b>	<b>5</b>
List of your active planetary aspects	6
<b>Possible jobs, motivation and assets</b>	<b>8</b>
Your suitable jobs, your career	8
Your professional motivation	9
Your assets and your weaknesses	10
<b>Alternative professional paths</b>	<b>12</b>
<b>The daily atmosphere at work</b>	<b>14</b>
The nature of your daily work	14
The way you experience your professional duties	15
<b>The money earned through your work</b>	<b>15</b>
<b>Your integration and career development capacities</b>	<b>15</b>
<b>Predispositions which may have an influence</b>	<b>16</b>
<b>Conclusion</b>	<b>19</b>





# Angelina's Career and Vocation

## Introduction

What is my calling? Is my job made for me? If I feel like changing direction, which one may suit me? Have I got several options? Am I right to undertake this training? Here are questions which may pop up at any stage of our life, bearing in mind that our modern society forces us to do soul searching more than in the past. In addition, the professional context has become tougher, and often compels us to take stock of our potential and our aspirations.

For this report, focusing on career and vocational guidance, we have chosen to analyse the features specific to these areas, leaving aside those which are related to the personality in general, such as for instance the Sun sign - Ascendant combination, which provides only indications on the character: indeed, one may very well have a career in the military while being a Cancer or a Pisces. Similarly, one may be a perfume creator and an Aries or a Sagittarius.

In the case we are interested in, i.e. carrying out an astrological diagnosis of your social and professional destiny, it is the 10th House taken in its entirety, starting with its cuspid, the Midheaven (MC), that we assess in detail. It is necessary to examine the sign it tenants, the aspects formed by planets if any, as well as their presence in the 10th House. Technically, the position of the axes is given by the time and place of birth. Therefore, it is a particularly precise and personal indicator.

Traditionally, the whole 10th House provides information on the social status and the success concretely seen by everybody. It is a "brilliant" House, as demonstrated by many acclaimed astrologers, and the planets conjuncting the MC axis are often dominants, and those in the 10th House are always important for the entire chart. Among other works, we refer in this regard to the researches of Michel Gauquelin, who has established statistics showing this power of influence. It goes without saying that these effects are mainly felt in the social and professional area.

However, one must not deduce a contrario that people having no planets conjunct the MC or even posited in the 10th House will not experience a remarkable professional destiny. In the charts of Barack Obama, Steven Spielberg, or Rupert Murdoch, there are no planets in this House. Nevertheless, their destiny will go down in history. Why? Simply because other indicators are at play.

Beyond idealistic concepts like destiny, each of us is led to practise a job or to accomplish

daily routine tasks, which are utterly important, given the time we dedicate them. This practical profile, which concerns our duties, is described by the 6th House. The astrologer finds there elements on the ambiance which may suit us, and on our relationships with colleagues or possible partners.

It is also necessary to examine income. Don't we say "to earn one's living"? When the moment comes to choose a profession, we wonder whether it will feed us. This is why we must mention it and analyse the ruler of the 2nd House as well as the planets posited in this House.

Work is above all a powerful agent for social integration. Ideally, everyone is prompted to bring one's personal qualities into the public sphere. The role of Jupiter and his possible link with Saturn is studied here as a factor of adaptation to society.

The distribution of the planets in the natal chart also provides additional fine-tuning or further confirmation of certain characteristics regarding the way the person experiences his professional development.

Let us precise once more that, in our opinion, each sign enables to practise any activity. On the other hand, the person concerned behaves in ways which are specific to each zodiacal temperament.

Since astrology is neither deterministic nor fatalistic, your chart will not stick a label or define a precise job for you. But it will offer food for thought based on your penchants, your talents, and your competences.

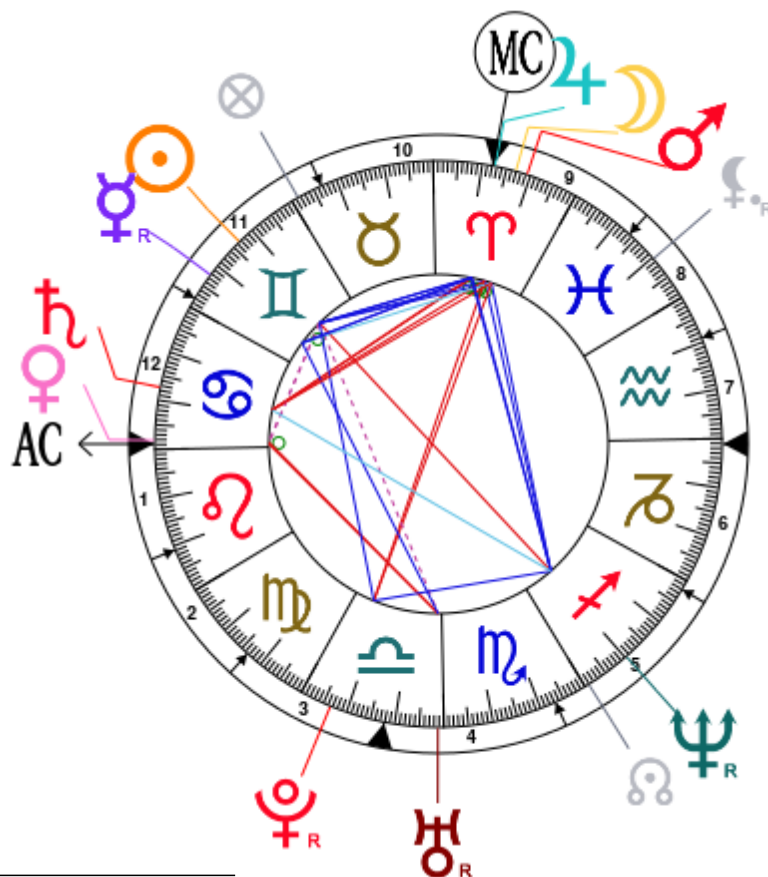
Thus, we hope that this report will enable you to better discern your natural affinities so as to find the best suitable path.

# Natal chart and planet's position

Angelina, born June 4, 1975, at 09:09 AM, Los Angeles (Los Angeles), California [118.14W ; 34.03N ; 7W00]

Natal Planets				In House	Natal Houses (Placidus)	
☉ Sun	13°25'	♊ Gemini	House 11	House 1	28°54'	♋ Cancer
☾ Moon	13°05'	♈ Aries	House 9	House 2	20°50'	♌ Leo
☿ Mercury	22°20' R	♊ Gemini	House 11	House 3	16°37'	♍ Virgo
♀ Venus	28°09'	♋ Cancer	House 1	House 4	17°53'	♎ Libra
♂ Mars	10°42'	♈ Aries	House 9	House 5	23°15'	♏ Scorpio
♃ Jupiter	17°25'	♈ Aries	House 10	House 6	28°01'	♐ Sagittarius
♄ Saturn	17°23'	♋ Cancer	House 12	House 7	28°54'	♑ Capricorn
♅ Uranus	28°48' R	♎ Libra	House 4	House 8	20°50'	♒ Aquarius
♆ Neptune	10°20' R	♐ Sagittarius	House 5	House 9	16°37'	♓ Pisces
♇ Pluto	6°31' R	♎ Libra	House 3	House 10	17°53'	♈ Aries
♁ Node	0°53'	♐ Sagittarius	House 5	House 11	23°15'	♉ Taurus
♇ Lilith	9°40' R	♓ Pisces	House 8	House 12	28°01'	♊ Gemini
AS AS	28°54'	♋ Cancer				
MC MC	17°53'	♈ Aries				

In keeping with the common practice, we consider that a planet posited within 1 degree of the next house belongs to that house. We allow an orb of 2 degrees for the ASC and the MC.



## List of your active planetary aspects

Below, provided for information purposes only, are the list of all your active aspects.

Stars indicate the strength of the aspects. The yellow colour indicates a soothing and conciliating aspect, and the red colour, a dynamic and tense aspect. The red aspects enable you to evolve, to take action, and to learn to turn your "weaknesses" into assets through your life experiences. The yellow aspects are innate strengths on which you rely in order to grow better with the former.

N.B.: to assess the condition of the rulers of the 10th and the 2nd Houses, as well as the condition of the planets in the 6th and the 10th Houses, all aspects between planets are taken into account, except for the aspects to angles, given their passive nature.

★★★★★	Sun sextile Moon, orb 0° 2'
★★★★★	Sun conjunction Mercury, orb 8° 54'
★☆☆☆☆	Sun semi-square Venus, orb -0° 15'
★★★★★	Sun sextile Mars, orb 2° 42'
★★★★★	Sun sextile Jupiter, orb -4'
★☆☆☆☆	Sun sesqui-quadrate Uranus, orb 0° 22'
★☆☆☆☆	Sun opposite Neptune, orb -3° 04'
★★★★★	Sun trine Pluto, orb -6° 53'
★☆☆☆☆	Sun semi-square Ascendant, orb 0° 28'
★★★★★	Sun sextile Midheaven, orb -4° 27'
★★★★★	Moon conjunction Mars, orb 2° 22'
★★★★★	Moon conjunction Jupiter, orb 4° 2'
★☆☆☆☆	Moon square Saturn, orb 4° 18'
★★★★★	Moon trine Neptune, orb 2° 44'
★☆☆☆☆	Moon opposite Pluto, orb -6° 33'
★★★★★	Moon conjunction Midheaven, orb 4° 47'
★★★★★	Mercury quintile Mars, orb -0° 22'
★★★★★	Mercury sextile Jupiter, orb 4° 54'
★★★★★	Mercury trine Uranus, orb 6° 28'
★★★★★	Mercury sextile Midheaven, orb 4° 26'
★☆☆☆☆	Venus square Uranus, orb 0° 38'
★★★★★	Venus conjunction Ascendant, orb 0° 44'
★★★★★	Mars conjunction Jupiter, orb 6° 43'
★☆☆☆☆	Mars square Saturn, orb 6° 4'
★★★★★	Mars trine Neptune, orb 0° 22'
★☆☆☆☆	Mars opposite Pluto, orb -4° 11'
★★★★★	Mars conjunction Midheaven, orb 7° 1'
★☆☆☆☆	Jupiter square Saturn, orb -0° 02'



Jupiter trine Neptune, orb 7° 05'



Jupiter conjunction Midheaven, orb 0° 27'



Saturn bi-quintile Neptune, orb -1° 02'



Saturn square Midheaven, orb -0° 29'



Uranus square Ascendant, orb -0° 05'



Neptune sextile Pluto, orb 3° 48'



Neptune trine Midheaven, orb 7° 32'

## Possible jobs, motivation and assets

### Your suitable jobs, your career

According to the Tradition, which dates back to Ptolemy, the 10th House, which begins with the Midheaven (MC), describes honours and dignities. The whole House gives the image of your overall destiny, with your major goals and your vocation, if it can be expressed openly. It is about potential for outstanding achievements and not about work as a means of existence.

Technically, the 10th House may include one or two signs, sometimes three. However, this report delineates only the MC, much more decisive according to the statistics, and essential in any case. The cusp of this axis points directly at the stars, since it is also the zenith of the chart. Therefore, its symbolism is clear. It speaks volumes about your ambitions, your lifestyle, your social status, and your social and professional success, as noticed by other people.

### Your MC is in Aries

Your public destiny must be such an adventure, Angelina! The MC in the 1st zodiacal sign indicates that you are eager to launch professional projects. Your dynamism is a character trait which should serve as a general guideline, bearing in mind that your thirst for novelty and commitment, as well as your will to undertake, will never pass.

Guided by the flame of your intuition, you love to play the pioneer. You are fond of boldness and singularity. You are a hyperactive person, and you rely only on yourself, literally taking control of your own life. Whether you like it or not, you must throw off constraints, including influences from your friends, from your family, or from any model, so as to assert yourself in the social and professional field.

With such a deep entrepreneurial spirit, you may be tempted to create your own structure and to be your own boss. You accept hierarchy only if it offers you enough leeway.

Among your other characteristics is the impatience to get concrete results. Fortunately, you have the necessary energy to fight. The downside is that you rapidly lose interest, and that any new project or idea seems more attractive than whatever demands perseverance. Since you dislike long-term efforts, you should choose a job which promises continuous changes.

You are courageous in your professional life, and you need to take up challenges. It is preferable to avoid unreasonable risks. Advice of moderation – although you do not quite follow it – is valuable.

Since you enjoy being where the action is, you may become an independent businesswoman. As a symbol for the head, Aries may prompt you to opt for the profession of creator, leader, coach, psychologist, or psychiatrist. Because the sign has a strong ego, all occupations in the media are attractive. If you are good with your hands, it is probable that you are not afraid to use physical force. For instance, you could consider being a



woodcutter, a mechanic, or a skilled worker in metallurgy. Similarly, you may opt for the police or the military, because you resist very well to stress. Anything related to sports may suit you.

The keywords defining your social and professional path are as follows:

Creation, innovation, courage, initiative, leadership, independence, vocation, certainties, challenges, transcending your own capabilities.

## Your professional motivation

You may not have been able to identify yourself with the concrete jobs enumerated at the end of the chapter dealing with the MC. Indeed, we carried out the exercise bearing in mind that it is impossible to give an exhaustive inventory for each of the twelve signs. Therefore we have chosen to limit it to the most typical ones, according to the traditional interpretation. However, a human being never corresponds to a "cliché".

On the one hand, there are so many medical practitioners, carpenters, or civil servants that the list could be endless, whether they are Aries, Taurus, Gemini, etc. The only nuance is that they are likely to practise in an Aries, Taurus, Gemini, and so forth, manner.

On the other hand, the world is changing, and nowadays, there is a large range of options which evolves fast. Fortunately, other indicators enable us to complete the picture. To begin with, we assess the role of the MC ruler, which also provides information on the way you work and how your vocation was born.

## Your MC ruler is Mars

Angelina, after having found the position of the MC, we focus on the planet ruling this sign, namely Mars, ruler of Aries. This is how we can learn more about your professional motivation.

It is certain that you lack neither punch nor energy! It would be good to use this ardour in the framework of a dynamic or competitive environment. You need to be stimulated to express all your talents, because nothing is worse than situations where everything seems granted.

Even if you meet with rivalries or obstacles as you race towards success, you do not mind, because you are concentrated on your objective, and you are anyway ready for a brawl, always courageous and enterprising.

## The ruler in the 9th House

Angelina, after having found the location of your MC and its ruler, we now look at the latter's position in House. This is how we get additional clues to your professional motivation, which may confirm the above, or sometimes, be completely different. Should this case occur, bearing in mind that a career profile is seldom uniform or bland, the possibilities of progress are widened.

In your chart, Angelina, the ruler of the MC is in the 9th House. It is very likely that the development of your career contributes to the widening of your horizon. Your work leads you to travel to faraway places or to establish relations with foreigners.

It may also indicate teaching, politics, or way of thinking. For instance, you may be in touch with universities or higher education institutions, or devote yourself to a noble cause in your region or your country.

In all cases, owing to your experiences, you grow wiser, more erudite, and more fulfilled.

To conclude the analysis of the ruler of your MC, we examine its condition, namely the number of positive and/or negative aspects it receives, among other factors, including the sign in which it is posited.

Angelina, the condition of Mars, ruler of your MC, is neutral. In general, it brings about neither special obstacles nor additional support for the expression of your professional motivation.

## Your assets and your weaknesses

Planets could be considered as lever arms enabling you to further your career. They influence this area of life according to their specific nature, and they show how you approach vocation, work, or social status.

When they are in the 10th House, their impact is direct, noticeable, and obvious. This applies all the more strongly to conjunctions with the Midheaven (MC), in which case they favour your position, or they warn about possible pitfalls. To use a metaphor, a planet on the Midheaven resembles a person who expresses easily his character, his temperament and his tastes when he deals with his career.

However, the 10th House is empty in many charts. This does not mean, in line with what we have written in the introduction, that this area of life is uneventful. In such cases, the analysis should focus on the Midheaven and on the ruler of the 10th House, which are not affected by the presence of other planets.

As far as your assets and weaknesses are concerned, it is also necessary to examine the planets aspecting the MC. Similarly to a presence in the 10th House, the aspect of a planet's specificity colours your social destiny, for good or ill.

Here again, in some natal charts, there is no relationship between the planets and the MC. This leads us to draw the same conclusion as that which we have just underlined whenever the 10th House is empty. This does not mean that there is nothing interesting to say, only that the interpretation must be limited to delineating the sign sheltering the MC and its ruler, who remains the "sole person in charge", regardless of his position in the chart.

## Jupiter conjuncts the MC axis and is in the 10th House

Angelina, in your chart, Jupiter conjuncts the MC. With such a position, this planet is among your dominants. Its influence is reinforced as far as the career is concerned. You are willing to achieve brilliant success, and you manage to attract good opportunities. You grasp them in Jupiter's style, lawfully and righteously, with your organisational qualities, your seriousness, and your managerial skills, thus inspiring confidence in people. You do not conceal your ambitions, which are generally well-received, for you display bonhomie and generosity. Nonetheless, be careful not to overdo it, because you may give the impression that you want to crush people, without even realising it.

## The Moon conjuncts the MC axis

Angelina, in your chart, the Moon conjuncts the MC. With such a position, this planet is among your dominants. Its influence is reinforced as far as the career is concerned. Your popularity rating plays a deciding role in your social and professional route. You often benefit from the public's sympathy. You are yourself extremely adaptable and receptive to people. You may also have a large number of regular customers, regardless of your field of activity. When you manage public affairs, you do not hesitate to let your imagination and your emotions guide you. You know how to progress with great flexibility according to the context.

## Mars conjuncts the MC axis

Angelina, in your chart, Mars conjuncts the MC. With such a position, this planet is among your dominants. Its influence is reinforced as far as the career is concerned. Your main asset is energy. Your capacity for action is big, and you never have the impression that you are making too many efforts in order to progress. You need to take up challenges one after the other. Indefatigable, dynamic, and courageous, you adore taking initiatives. Thus highlighted, Mars often indicates the temperament of a leader, with both its qualities and its flaws. You can throw memorable tantrums, but fortunately, you are stimulated by difficulties...

## Saturn in square with your MC

Angelina, it is likely that owing to this Saturnian influence you have experienced a few hinders when you started your professional life. Nothing will come rapidly or easily. You need to make efforts which require time and investment, literally and figuratively. You painfully feel that you risk losing your job, and you may get yourself snarled up in a deadlock.

Saturn is there to prompt you to meditate on the purpose of your career or the vanity of honours. It does not mean that these drawbacks prevent from getting very nice results, only that they are achieved at the price of sacrifices or at least of a constant discipline. Aim at your goal without getting discouraged, and your career will live up to your ambitions.

## The Sun in sextile with your MC

Angelina, in your chart, the Sun is positively linked to your MC. This position has many things in common with the Sun in the 10th House, though to a lesser extent. In any case, it indicates that your need to shine in society is likely to stir up good echoes. Theoretically, your innate self-confidence enables you to establish yourself in the social and the professional sphere.

Owing either to your aura or to the support of distinguished personages, you access to managerial responsibilities more easily than other people. This aspect also provides a good balance between the expression of your deep personality and the possibility to make use of any available means to move forward socially. You are blessed with powerful protections, and you can have a rewarding job. Your will is in agreement with your destiny.

## Mercury in sextile with your MC

Angelina, in your chart, Mercury is positively linked to your MC. This aspect indicates that your intellectual capacities or your resourcefulness are at the service of your career. A good sense of communication and contact are valuable assets to progress and to score points in the social and professional circles. You put to good use flexibility, adaptation qualities, and the cleverness proper to Mercury. This planet linked to the MC offers you possibilities which are as numerous as your talents. Fortunately, Mercury gives a fair share of realism, and therefore, you are able to manage any sort of situation.

## Neptune in trine with your MC

Angelina, in your chart, Neptune is favourably linked to the MC. This planet heralds that your success is often brought about by social trends. You are in tune with your time, and it does not matter if you do not have a sound strategy, since all you have to do is to listen to your intuition. It is the typical position of a person feeling that he is guided in his career, although his desires seem unrealistic to people. Imagination and inspiration, even artistic talent, are the driving forces of your improvement. Here, it is out of the question that you get smothered in a rigid setting. You know how to make your way up to the top through pitfalls.

## Alternative professional paths

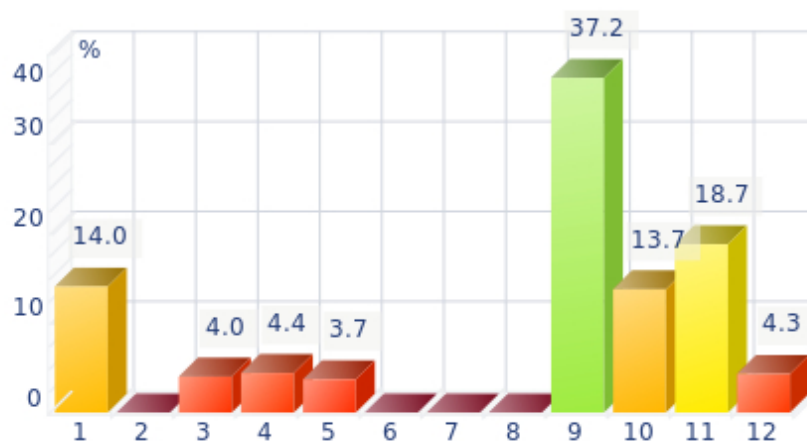
In the previous chapter, we have seen the meaning of the Midheaven and of its ruler. Indeed, in many cases, they can provide relevant information about your professional future and about the most suitable paths for you.

However, the Midheaven, the 10th House, and the 6th House, which are discussed further down, do not always reveal the entire range of social and professional possibilities of your natal chart. Certain areas of life – symbolised by the 12 astrological Houses of your chart – are highlighted by the presence, the dignity, or the activity of the planets posited in them.

Some Houses are deemed dominant. They give additional indications in terms of taste, of

desire to express your talents and to spend your energy, especially in your work. They represent different potentialities, which are offered to you in addition to those mentioned in the other chapters.

### Your Dominant Houses



We are describing here the meaning of your dominant Houses, except the 6th and 10th Houses, already analysed in this Report, and the 1st House, which is not related to any concrete life area and therefore can provide no information here.

#### The 9th House is one of your dominants

The 9th House is noticeably more important than the 11th House in your chart. It is your responsibility to pay more attention to it.

The 9th House is that of remote lands, both literally and figuratively: that of travels, foreign matters, but also of higher education and all intellectual topics: philosophy, religions, politics, sciences, grandes écoles, and universities. It encompasses ideals, wisdom, faith, and public life in general. It sometimes endows with social ambition.

The professions corresponding to a strong 9th House are those having the responsibility to enforce or to devise laws and to make a judgment on public morals: magistrate, priestess, lawyer, politician. You can also work in a field linked to foreign matters, whether or not you have settled in another country: travelling salesperson or manager of branches throughout the world, explorer, archaeologist, ambassador, tour guide, aviator, interpreter, manager of a travel agency.

Intellectual activities are also a path compatible with this configuration: economist, lecturer, university teacher, scientific researcher, philosopher, mathematician, research physicist.

#### The 11th House is one of your dominants

The 11th House is that of support, protection, and friendship. It also represents collective projects, hopes, humanitarian and social causes, facility for joining groups. It is a House

which may have less concrete implications than some others in terms of professional occupation, but which on the other hand is more general and offers more possibilities of career.

With an 11th House among your dominants, you are certainly prone to work with a group rather than solo. Jobs related to ecology, climatology, trade unionism, humanitarian help, NGOs may perfectly suit you.

By analogy with the sign of Aquarius, other professions may suit you: film director, pilot, astronaut, radiologist, inventor, specialist in the development of high tech products, engineer, psychotherapist, audio-visual technician, electronics specialist, computer programmer, or webmaster.

## The daily atmosphere at work

### The nature of your daily work

The analysis of the sign in which the 6th House is found reveals a lot about the nature of your daily work. Whereas the Midheaven and the 10th House represent your vocation, your career, and your visible social status, the 6th House relates to your routine activities when you perform your job. It describes the atmosphere at the workplace, the relationships with your colleagues as well as with your clients or your suppliers.

The 6th House is about duties. It tells how you deal with constraints or limitations, if they affect your ambitions, or if you fit into the mould without difficulty.

It is necessary to keep in mind that this House is slightly less important than the 10th House, which is about professional ambition. Indeed, in the tradition, astrologers do not give extra weight to planets posited there, whereas planets conjunct the MC are often included in the dominants of the whole chart.

Despite all this, the analysis of this part of the chart remains unavoidable in the career portrait, for it describes your usual daily activities. The concept of "day to day" activity is of the utmost importance here.

### The 6th House in Sagittarius

Angelina, with the cuspid in Sagittarius, your 6th House prompts you to seek movement in your daily activities. Besides, you grasp every opportunity to travel whenever you can. In any case, your urges are hard to control. You have difficulty accepting constraints and immobility.

Depending on your training level, you aspire to an outdoor work or to explore higher intellectual matters.

You know how to spread great joie de vivre and good mood around you. Your colleagues appreciate the fact that you are the life and soul of the workplace, and that you dare to take

bold initiatives. Work must be a pleasure, and you always celebrate any good news.

## The way you experience your professional duties

We still have to check whether you have planets in this House, similarly to what we have done for the 10th House.

Angelina, you have no planet in the 6th House. Therefore, no particular or additional information can be provided on what has been described above (in the paragraph about the 6th House).

## The money earned through your work

"The labourer is worth his hire". Regardless of your field of activity – free-lance job, employee, labourer, civil servant, artist, etc. – remuneration is a key factor. To understand the way you approach this topic, we shall focus on the planet ruling the 2nd House, i.e. the money you earn, since its influence may speak volumes about your capacity to turn your efforts into hard cash. In some cases, it confirms or invalidates the first texts of analysis of the career.

### The Sun is the ruler

Angelina, the ruler of the 2nd House of the chart is the Sun. The planet symbolising power and will is a good indication of self-assertion as far as remuneration is concerned. You manage to get a financial compensation matching the high image you have of your professional skills. The way you look at your earnings is detached, as they are in no way your main purpose. You enjoy very much the ascendancy money provides, and you equally appreciate the fact that you use it without qualms, since you owe it only to yourself.

### The ruler of the 2nd House is in the 11th House

Angelina, the ruler of your 2nd House is in the 11th House. Associative circles, encounters, humanitarian matters, and projects may be good sources of income. If you link up with a group, you can make a better living than if you go it alone.

## Your integration and career development capacities

We are now assessing Jupiter's position in your natal chart, which indicates how you become socially integrated.

Jupiter expresses your need or your capacity to cooperate with other people.

He also symbolises the law and the ability to adapt to rules, which is always helpful as we analyse how your vocation could fit in a society project.

Moreover, Jupiter describes the way you organise yourself, your learning potential, and your

aptitude for leading a group.

This lucky planet is related to honours, to the development of your professional activity, and to the improvement of your social status.

## Jupiter in the 10th House

Angelina, in your chart, Jupiter is in the 10th House. In this position, the planet indicates great chances of success. You are endowed with undeniable charisma, and you manage to stir enthusiasm with your outstanding actions. Your ambition to reach your full potential through social and professional objectives is most likely to be achieved. Generous and confident, you do not hesitate to put yourself at risk in order to carry your projects through to a successful conclusion.

A report on career must examine whether there is a link between Jupiter and Saturn. The former enlarges personal horizons so as to become integrated in a group and to lead it, while the latter describes the context and the rules to be followed. Both planets form a pair, the aspects of which, if any, strongly impact the way you behave in the social and professional sphere. A possible aspect between these planets provides clues to your capacity to improve your career and to adapt to society.

## Jupiter est en square avec Saturne

Angelina, in your chart, Jupiter is in harsh aspect with Saturn. Throughout your professional life, you may undergo a few hindrances limiting your will to further your career. Social and professional integration may not occur as easily and rapidly as you hope. You may definitely achieve your ambitions and experience success, but you will have to make compromises and to remain self-confident despite pitfalls.

## Predispositions which may have an influence

As this report is drawing to a close, we offer additional precisions to the professional tendencies described above, and we analyse the distribution of the planets in your chart, based on elements, modes, and quadrants.

Signs are distributed among four elements: Fire, Earth, Air, and Water. Therefore, each chart displays different proportions of them and reveals specific dispositions.

The way planets are posited in the chart divided into four equal geometrical parts must be considered: it is the distribution in quadrants.

Then, in a third step, we examine the planets' position in modes: cardinal, fixed, and mutable. By analogy, they refer to a period of the season: cardinal for the beginning, fixed for the middle, and mutable for the end.

By looking at the place where the majority of planets are, we get extra pieces of information which complete the report on your career, based mainly on psychological inclinations. This

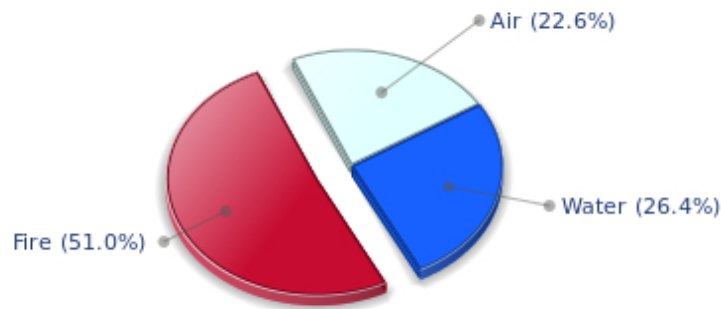


predisposition is synonymous with deep preference, and not with determinism.

### Your dominant element is the Fire

This is the diagram drawn from the distribution of the ten main planets of your chart, according to the elements:

#### Your Four Elements

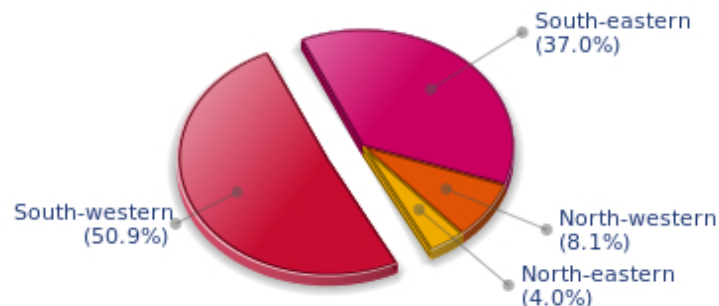


Angelina, in your chart, the Fire element, corresponding to the signs of Aries, Leo, and Sagittarius, is the most important one. With a dynamic temperament, you are very intuitive and enthusiastic. You have – or not – a passion for a work. If you do not, do not insist, you will not be able to go against your nature and do something which you do not enjoy. You may lack perspective or behave too boldly in your undertakings. Conversely, your faith can move mountains.

### Your most represented quadrant is the South-West

Here is now the distribution of your quadrants, drawn from the analysis of the importance of the planets and the angles of your chart:

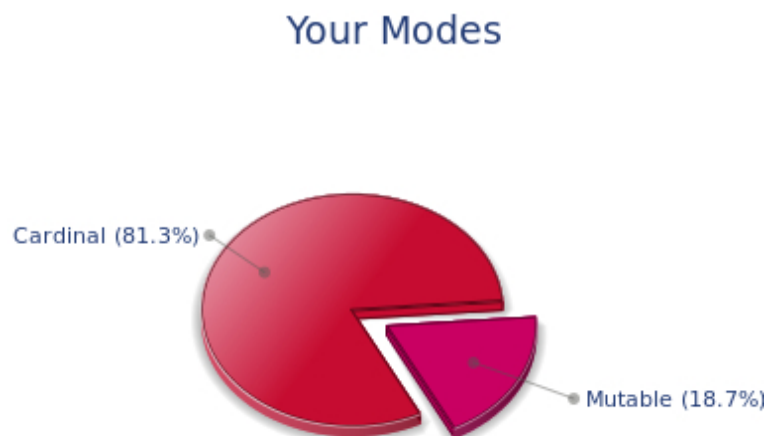
#### Your Four Quadrants



Angelina, in your chart, the South-West quadrant, represented by the 7th, the 8th, and the 9th Houses, is prevailing. You have a strong need to communicate, and to take certain risks with people. You progress through your exchanges, and you accept to take a new look at yourself under people's influence. This is how this energy offers you a more enlightened conscience. A form of rebellion or a desire to escape is ingrained in you almost permanently.

### The mode cardinal is dominant in your chart

Here is now the diagram of your modes, based on the analysis of the planets and the angles of your chart:



Angelina, in your chart, the Cardinal mode is preponderant. Your indisputable forte is your ability to take initiatives. You are very active and innovative. As far as your professional life is concerned, you are a born leader, and you are enthusiastic. Activities requiring adrenaline may suit you. However, you may be slightly too individualistic, or you may get tired rapidly, because your interest in your projects is not sustained enough.

## Conclusion

The purpose of this report on your professional choices is to suggest tracks to explore. Of course, it has limits, even though, compared to other disciplines, astrology enables to unveil important secrets. It contributes in particular to confirm a diagnosis made by specialists in vocational guidance.

It is impossible to guess your occupation or to foresee that which you may choose, because, for instance, no astrological report can take into account your social environment or your training level. Nevertheless, highlighting the abilities and the tastes reflected in your natal chart can steer you towards the type or types of career which may suit you best, which is already a lot.

We hope that thus you have a clear idea of the kind of activities for which your motivation is the strongest.

Today more than ever, the range of professions is very wide, and new branches emerge each day. People also change direction more often throughout life.

We advise you to reread or to ponder over this analysis, which remains valid during your whole life, since it describes your skills at the potential level.

Also bear in mind that planetary transits indicated in our predictive reports sometimes provide the trigger necessary to embark on an activity at a given period – or to follow a different route – thus turning your potential into a real professional experience.